



Installation Guide

GP132 Wiring

Product:	System 5 Software/Hardware	Software Version:	eMix 2.5 and higher
Audience:	All	Document Version:	1.0
Subassembly:	GP132	Date:	June, 2002

Installation

NOTE: *Incorrect connections can damage the GP132 or connected devices.*

Each DB25 connector has eight relay outputs and eight opto-isolated inputs. Since outputs and inputs share common lines, be careful when attaching multiple devices to the same connector. Inputs accept 5–24 V (AC or DC). Output relays are rated for 500 mA. Contact Euphonix Customer Service if you are planning to apply more than 24 V to the tally inputs or need to drain more than 500 mA for the relays.

MIDI Connections

Connect the MIDI in/out ports of the GP132 to the System 5 MIDI Interface as shown in Figure 1. The first GP132 is connected to Port 2 in/out of the MIDI Interface. Additional GP132s (up to four) should be connected to Ports 3, 4, and 5, respectively.

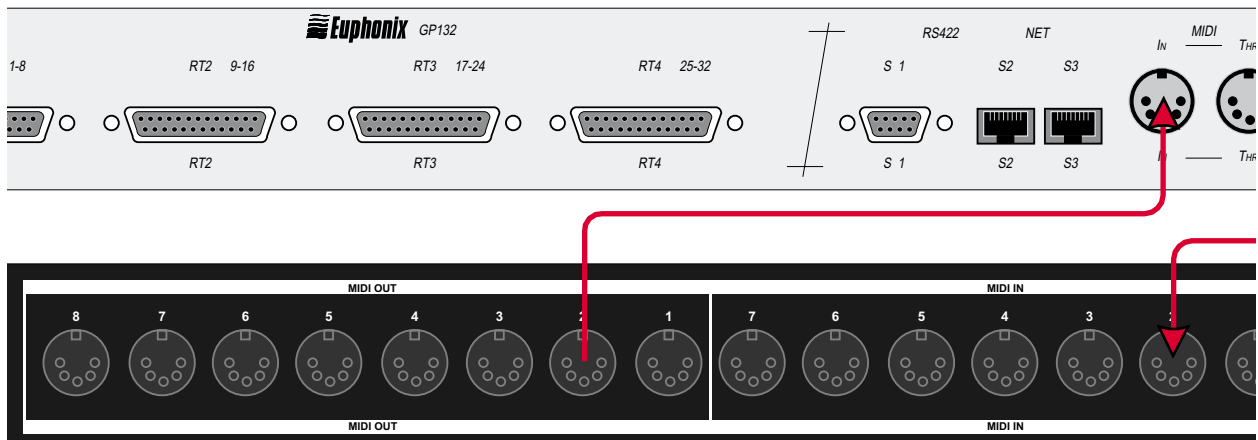


Figure 1

Input and Output Connections

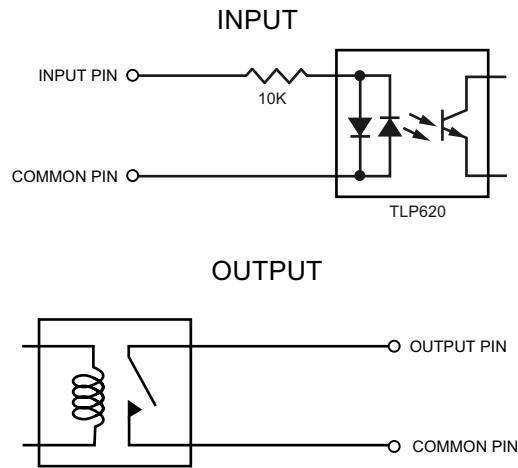


Figure 2

Connector Pinouts (DB25 RT1–RT4)

Table 1 Outputs

RT1	RT2	RT3	RT4	PIN
1	9	17	25	2
2	10	18	26	16
3	11	19	27	5
4	12	20	28	19
5	13	21	29	8
6	14	22	30	22
7	15	23	31	11
8	16	24	32	25
Common	Common	Common	Common	13



Table 2 Inputs

RT1	RT2	RT3	RT4	PIN
1	9	17	25	1
2	10	18	26	15
3	11	19	27	4
4	12	20	28	18
5	13	21	29	7
6	14	22	30	21
7	15	23	31	10
8	16	24	32	24
Common	Common	Common	Common	3,6,9,12,14, 17,20,23

Setting up the Unit

The GP132 has a three-state toggle switch on the right of the front panel:

Setup

For operation with System 5, select **1-MIDI** and **2-MMC** on the front panel. All other selections should be turned off except for **23-24T** which remain on.

Relays Only

The front panel displays the state of the relays (outputs) and allows control of the relay closures manually from the buttons on the front panel.

Relays + Tallies

The front panel displays the state of the inputs and allows control of the relay closures manually from the buttons on the front panel.

Event System Operation

Refer to the **Event System** section of the **System 5 Digital Audio Mixing Operation Manual** for event system setup and application examples.